



User Manual

HOME



NOCTUA NV-PS1
24W AC/DC power supply for
powering 12V PC fans off wall outlets

NOCTUA NV-PS1

24W AC/DC power supply for powering 12V PC fans off wall outlets

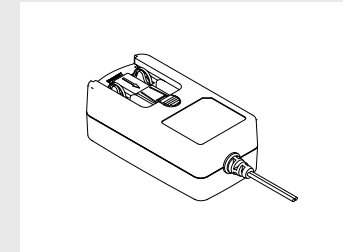
The NV-PS1 is a compact, premium grade 24W AC/DC power supply that's ideal for powering 12V fans off the mains for home, office or multi-purpose ventilation tasks.

With full CE and UKCA compliance, safety certifications from UL and TÜV as well as protection against over current, over voltage and short circuits, the NV-PS1 is a safe quality device through and through.

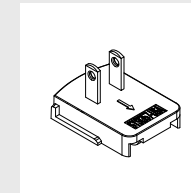
NV-PS1 SPECIFICATIONS

Input voltage	90~264 V AC	EMC standards	EN 55032 Class B, FCC Part 15 Subpart B Class B
Input frequency	47~63 Hz	Input connectors (included)	type C (CEE 7/16, for Europe, Russia, Brazil, South Africa, etc.), type A (NEMA 1-15, for USA, Canada, Mexico, Japan, etc.) and type G (BS 1363, for UK, Ireland, Singapore, etc.)
Standby power consumption	0.075 W	Output connector	5.5mm (outer diameter) / 2.1mm (inner diameter) barrel with NA-AC10 4-pin
Protection	Over voltage, over current, short-circuits	Cable length	1.5 m
Protection class	II	Warranty	6 years
Operating temperature	0~40 °C		
Operating humidity	8~90 %		
Safety standards	EN 60950-1:2006+A11+A12+A2, EN 62368-1, IEC 62368-1:2014, UL 60950-1 (2nd Edition), CAN/CSA C22.2 No. 60950-1-07 (2nd Edition)		

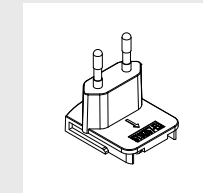
Included parts



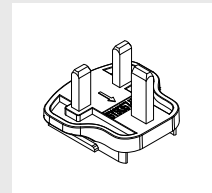
NV-PS1
power supply



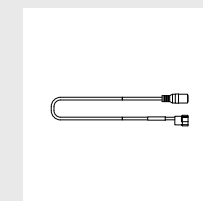
US socket adaptor
(Type A)



EU socket adaptor
(Type C)



UK socket adaptor
(Type G)



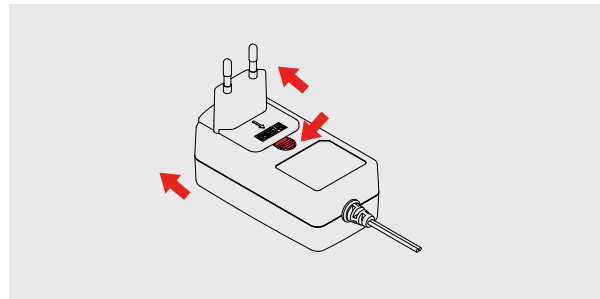
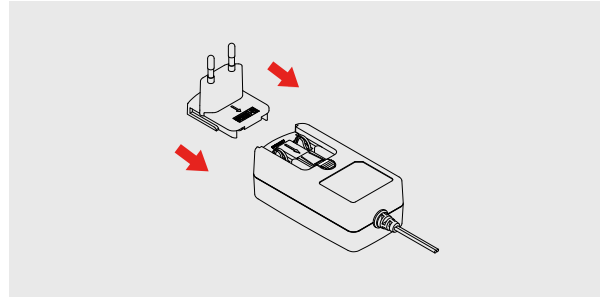
NA-AC10
barrel to 4-pin adaptor cable

Setup

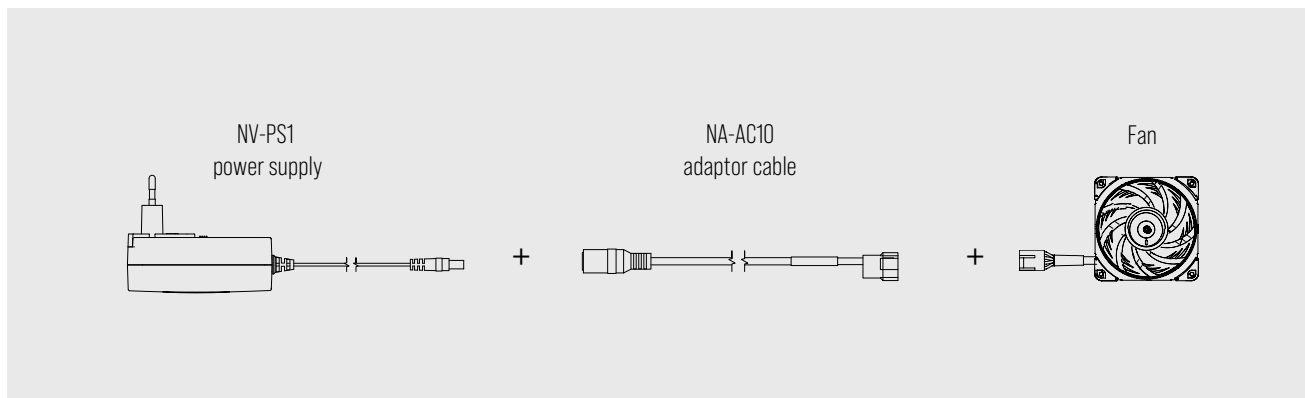
The NV-PS1 includes modular connectors for type C (CEE 7/16, for Europe, Russia, Brazil, South Africa, etc.), type A (NEMA 1-15, for USA, Canada, Mexico, Japan, etc.) and type G (BS 1363, for UK, Ireland, Singapore, etc.) plugs.

To assemble the power supply, simply slide the chosen socket adaptor onto the main NV-PS1 device until it clicks into place.

To remove or switch the socket adaptor to a different socket type, hold down the release button and slide it back up, as shown.



The included NA-AC10 adaptor cable allows for connecting 3-pin and 4-pin PWM fans to the NV-PS1's 5.5mm barrel connector. Simply insert the NA-AC10 adaptor between the primary fan cable and the power supply.



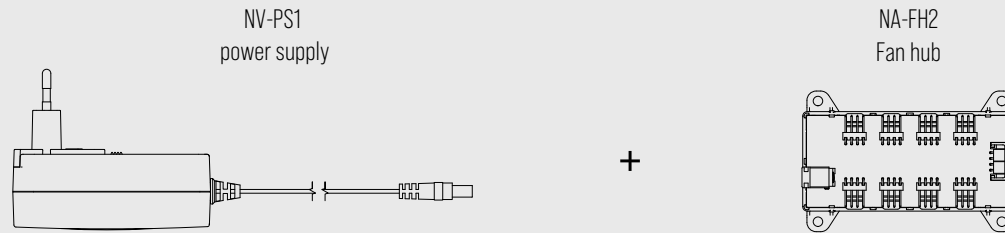
Fan hubs and controllers

With a maximum output power of 24W, the NV-PS1 has the capacity to run several high-speed fans using optional NA-YC1 y-cables or fan hubs such as the NA-FH1 (via the NA-AC10 adaptor) or NV-FH2 (via the NV-PS1's barrel connector).

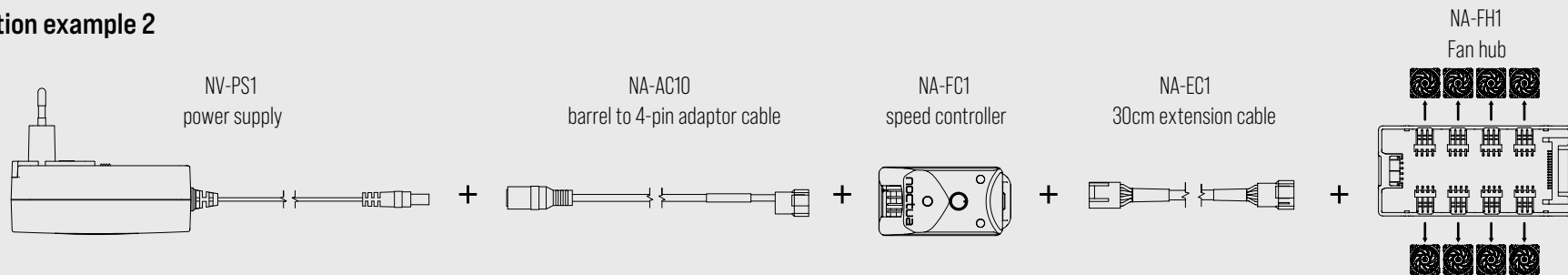
Additionally, the NV-PS1 can also be combined with the optional NA-FC1 controller in order to manually adjust the RPM speed of 4-pin PWM fans. When used with NA-YC1 splitter cables or NA-FH1 fan hubs, the NA-FC1 can be interconnected for controlling multiple fans simultaneously.

Example setups

Application example 1



Application example 2



Application example 3

